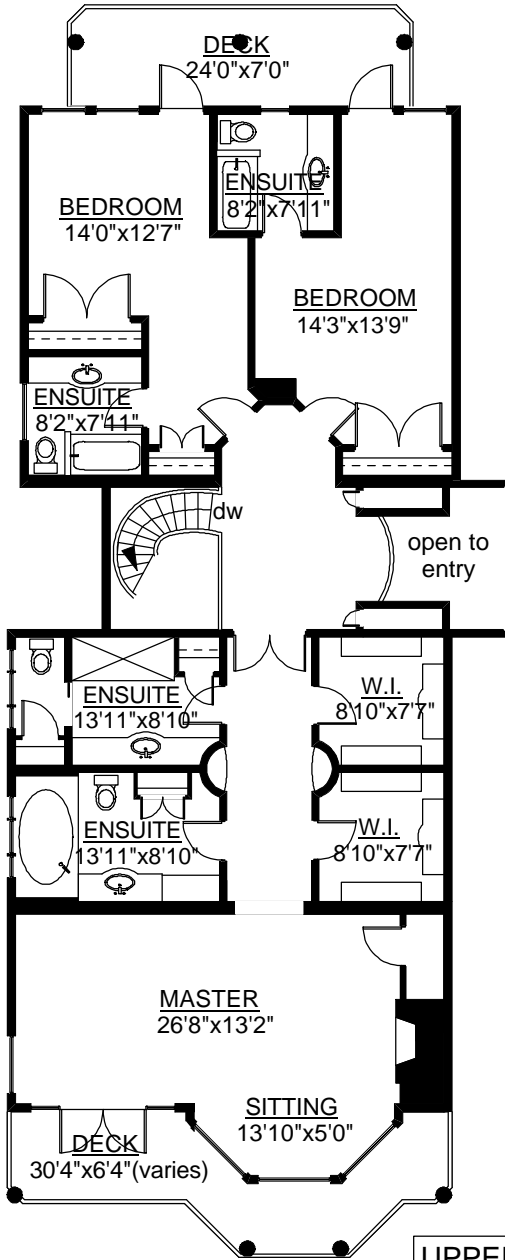
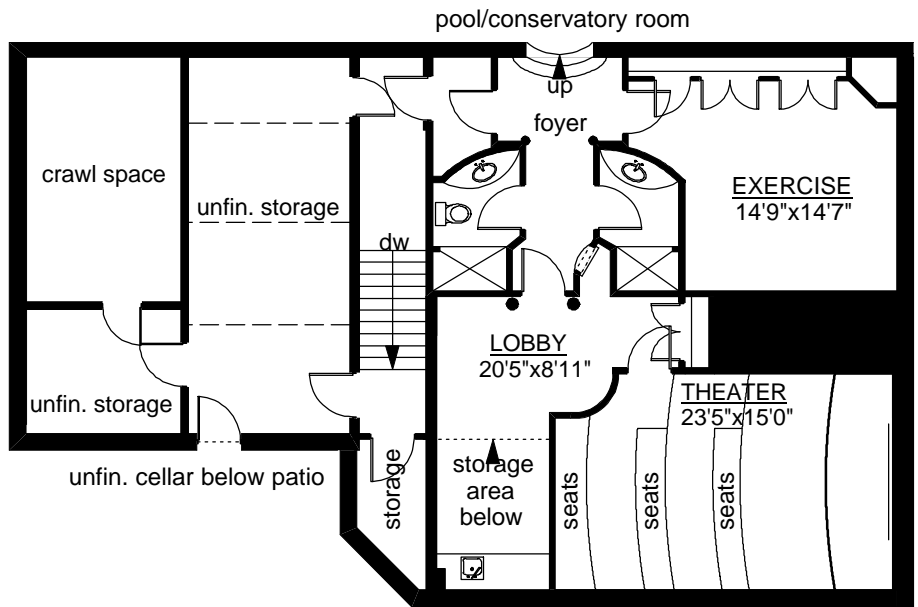


# VILLA MADRONA

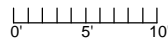


**UPPER FLOOR**  
2068 SQ.FT



**LOWER FLOOR**  
2199 SQ.FT

	FINISH SQ. FT.	UNFINISH SQ. FT.	TOTAL SQ. FT.
MAIN	7414	0	7414
UPPER	2068	0	2068
LOWER	1524	675	2199
<b>TOTAL</b>	<b>11006</b>	<b>675</b>	<b>11681</b>
GARAGE	0	757	757
CARPORTS	0	1336	1336
WORKSHOP	1015	0	1015
TEAHOUSE	193	0	193
ORCHID HOUSE	193	0	193
PATIOS	0	3576	3576
DECK	0	520	520



MEASURED ON: 08/18/04  
DRAWING FILE: #0514

**Tafe**  
**M**measure

VICTORIA, B.C.  
Ph. 883-8894