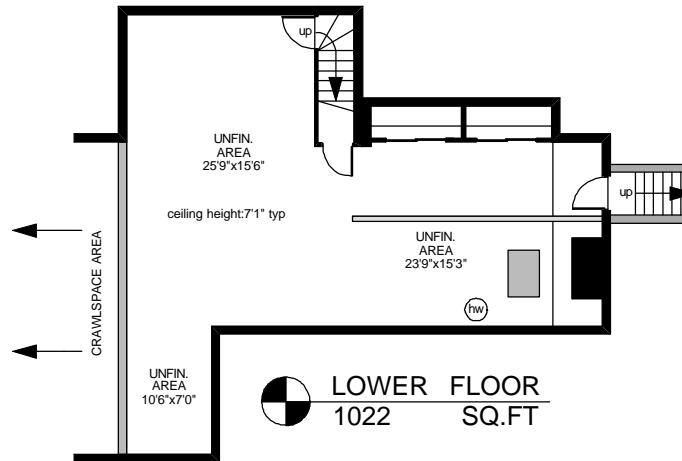
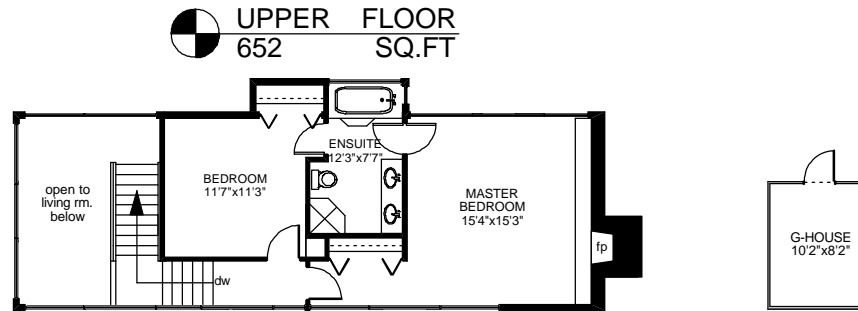
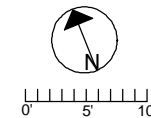


941 STURDIES BAY RD.



	FINISHED SQ. FT.	UNFINISHED SQ. FT.	TOTAL SQ. FT.
MAIN	1909	0	1909
UPPER	652	0	652
LOWER	0	1022	1022
TOTAL	2561	1022	3583
CARPORT	0	792	792
COTTAGE	1340	0	1340
COTTAGE 2	469	0	469
PATIOS	0	1692	1692
DECKS	0	1623	1623
SHED	0	261	261
G-HOUSE	0	89	89



PREPARED FOR THE EXCLUSIVE USE OF
 PETER NASH OF MACDONALD REALTY VICTORIA
www.peternash.com

MEASURED ON: 10/25/10
 DRAWING FILE: 08503

Tafe Measure VICTORIA, B.C.
 Ph. 883.8894
www.tafemeasure.com