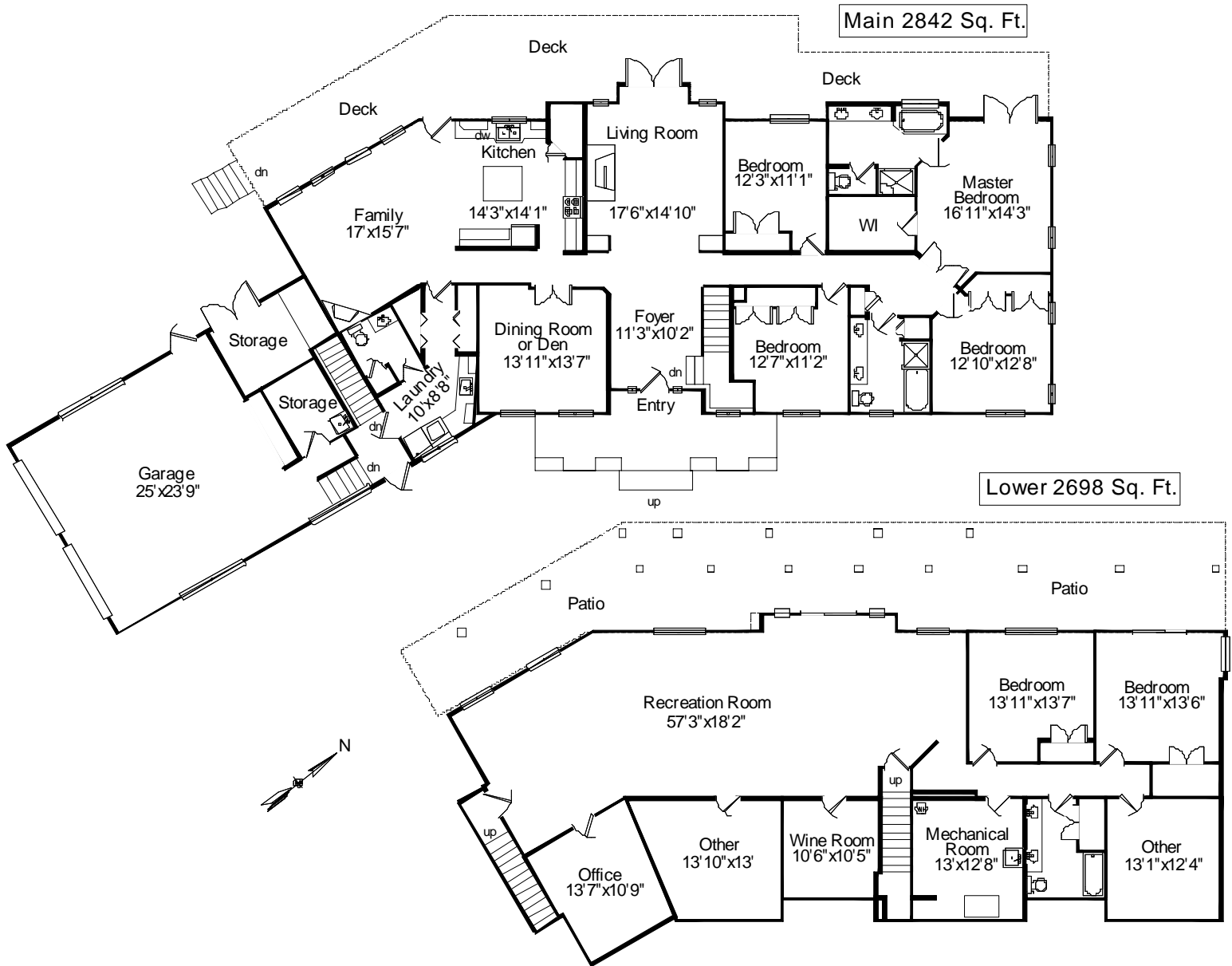


949 Lilmac Road Mill Bay, BC V0R 2P2



	Finished Sq. ft	Unfinished Sq. ft	Total Sq. ft
Main	2842	0	2842
Lower	2698	0	2698
Total	5540	0	5540
Garage./Strge.	0	370	370
Decks/Patio	0	1778	1778

Prepared for the exclusive use of
Peter Nash of Macdonald Realty Victoria
250.388.5882 or 250.384.0566
www.peternash.com
File # 875 Measured March 17, 2010
by True Measurement (250) 744-0911
Victoria, BC