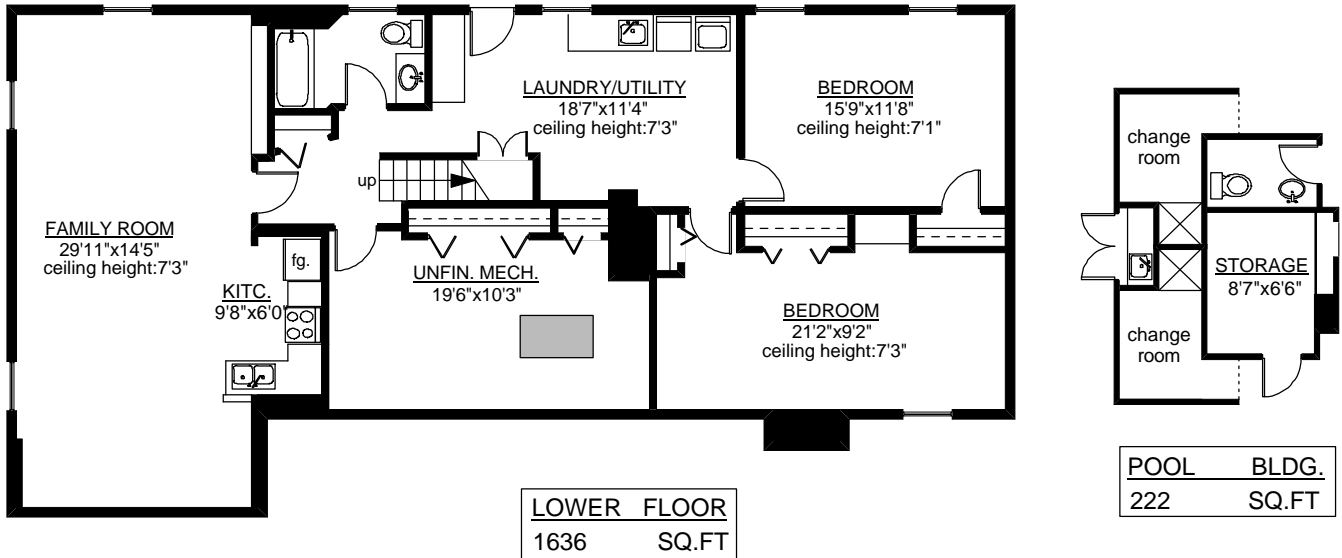
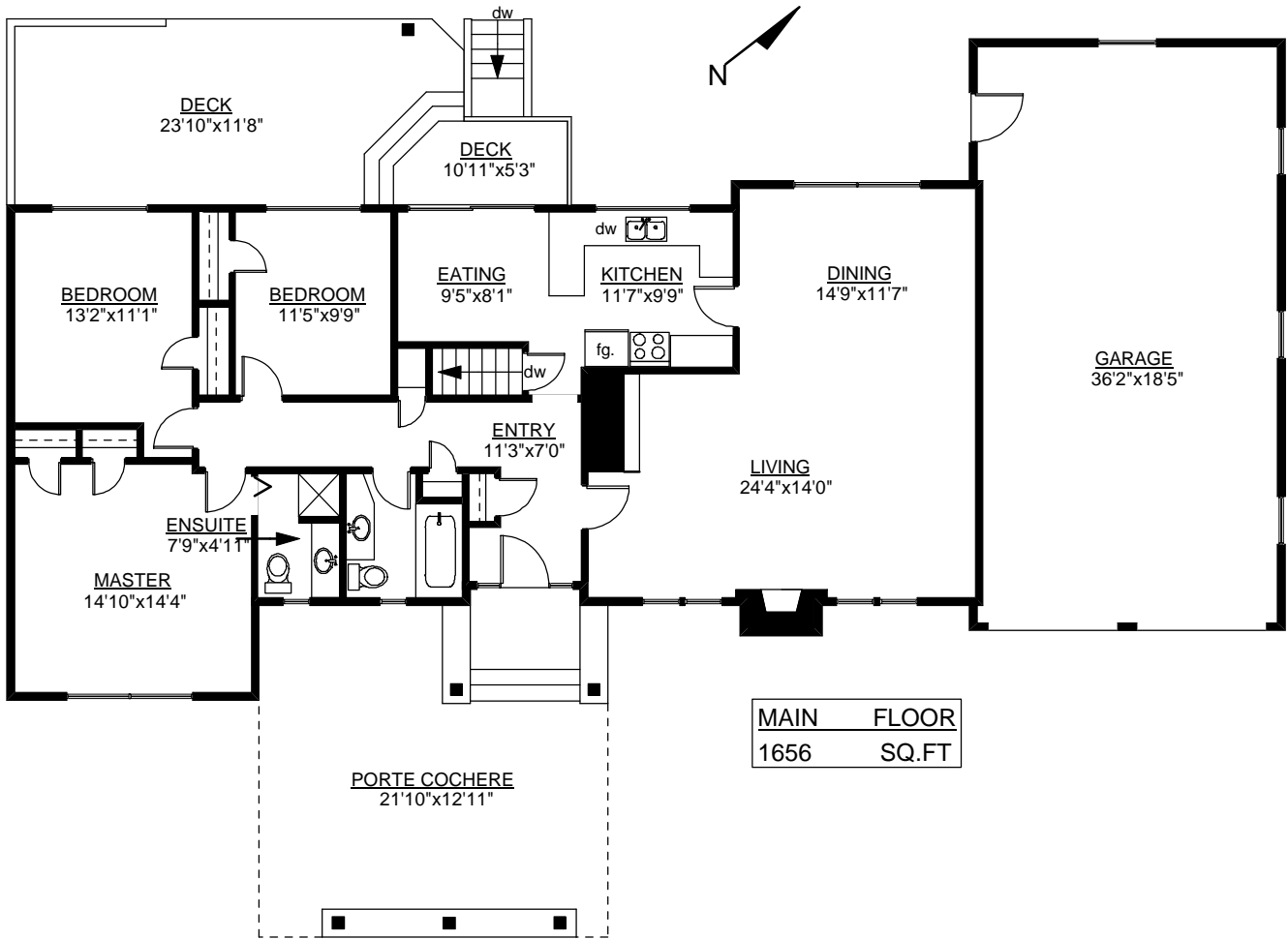
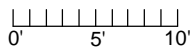


3020 LANSDOWNE ROAD



	FINISH SQ. FT.	UNFINISH SQ. FT.	TOTAL SQ. FT.
MAIN	1656	0	1656
LOWER	1419	217	1636
TOTAL	3075	217	3292
GARAGE	0	720	720
DECKS	0	369	369
POOL BLDG.	0	222	222
PORTE. C.	0	455	455



MEASURED ON: 09/21/04
DRAWING FILE: #0558

Tafe
Mmeasure

VICTORIA, B.C.
Ph. 883-8894